

Stewarts

Range of monoflange valves are specially designed to be installed directly onto your process equipment. The monoflange can be used for the direct attachment of pressure instrumentation where there is an ASME/ANSI integral flange present. They can also be “sandwiched” between sets of equipment to satisfy various design requirements of the system. The “single piece” integral design, used in place of flange adapters and separate valves, will reduce the number of potential leak paths while making your system much more compact.

Further advantages will be achieved in significant weight and component cost savings when compared to other conventional installation solutions.

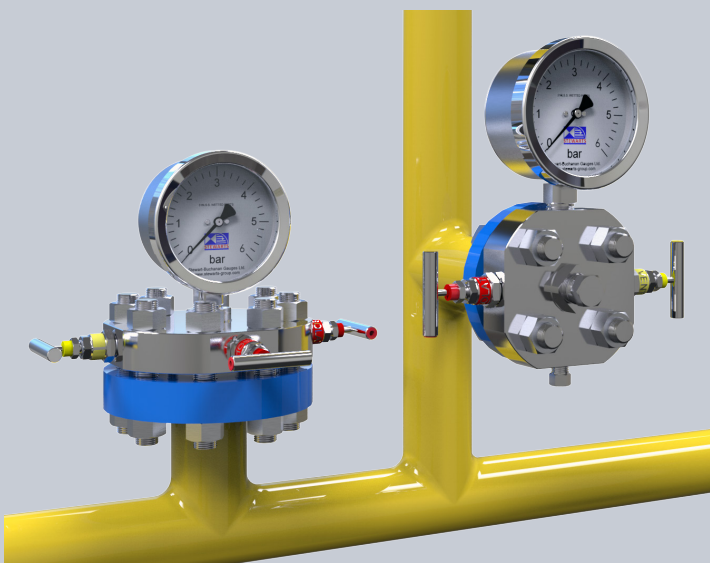
Monoflanges can be configured as either single block and bleed, or double block and bleed; with a plugged vent port for the bleed. The double block and bleed is also available with the Stewarts OS&Y needle valve in the primary isolation position.

Monoflanges, used in installations in accordance with ASME/ANSI standards, feature all metal sealing in the valve seat with metal to metal, bonnet to manifold interface seal.

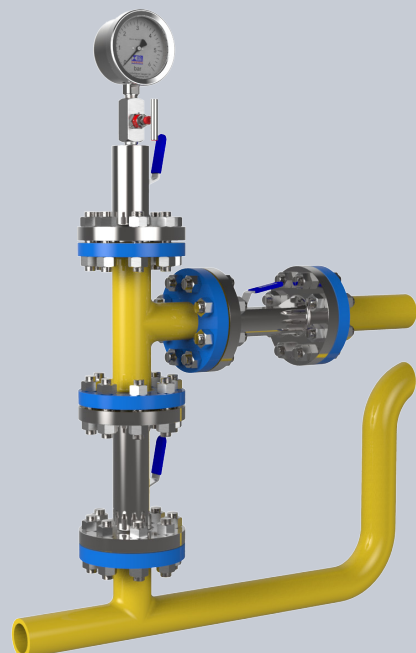
We manufacture in a full range of materials, flange types and ratings as well as offering a choice of outlet types, including threaded, flanged, integral SWIVEMAS® connection or chemical seal (specifically the Monoseal; for use and sold with Stewarts pressure gauges).

Continued on next page

Monoflanges



Traditional Hookup



Monoflanges

CONSTRUCTION

Manufactured from a single piece body; incorporating the valve heads and outlet connections.
Has trace code on body with material certificates available for all wetted parts on request.

Configurations

MONO - Single Block and bleed - Standard Isolate and Vent Valve (plugged port), Aux process connection.
DBBM - Double Block and Bleed - 2 x Standard Isolate and Vent Valve (plugged port).
OSYM - Double Block and Bleed - OS&Y Primary Isolate, Standard Secondary Isolate and Vent Valve (plugged port).
6033 - Single Block and bleed - Standard Isolate and Vent Valve (plugged port), Aux process connection, Integral Chemical Seal Output.

Inlet

The flanged process connection can be made to suit any International size or rating including, but not restricted to:
* ASME B16.5 & EN1092-1 Flanges from 1/2" to 2" in ratings from 150 to 2500 lbs in RF, and RTJ flange face styles.
* API 6A Flanges up to 2-1/16", 3000, 5000 & 10,000 lbs

Vent

1/4" NPT female vent as standard, others available upon request.

Outlet

Screwed female connections (1/2" NPT standard)
Auxiliary process (alternate instrument) plugged connection (1/2" NPT standard)
Alternatively in the Flange by Flange variants the outlet flange is identical to the inlet process flange.
Integral SWIVEMAS® connections to Stewarts Pressure Gauge or
Integrated connections to Stewarts Diaphragm Seal Gauge
(Monoseal - Model 6033, see SBG gauge catalogue for further details)

Pressure Rating

Pressure rating up to 10,000 psi (690 bar) - Standard needle valve manifold pressure as per flange / material rating

NACE (Optional)

All body & wetted parts materials (grades used) comply with the requirements of NACE MR 0175 / ISO15156.
It is the responsibility of the designer of the process system to ensure the correct material is selected.

NORSOK (Optional)

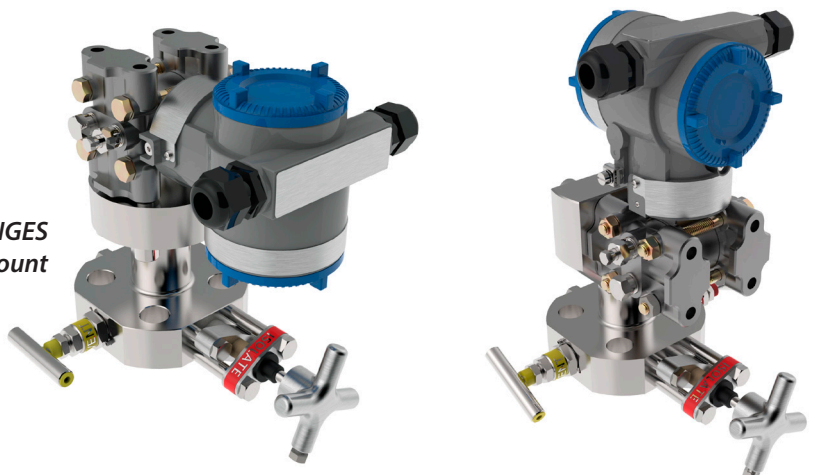
All NORSOK M-630 materials sourced from NORSOK M-650 approved mills on request

Fire safe (Optional)

On request, valves can be fire safe to BS 6755 Pt 2. (Max 6000 psi)

Note:- SWIVEMAS® connection conforms to ISO14000 / 14

*Close-Coupled Double Block and Bleed MONOFLANGES
Horizontal & Vertical Mount*



MONOFLANGES AT A GLANCE



Configuration Options

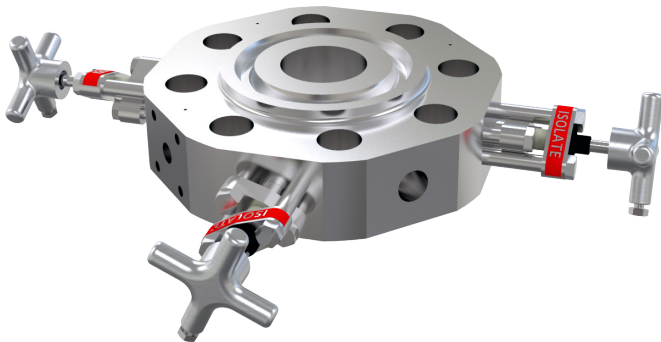
Other designs on request.



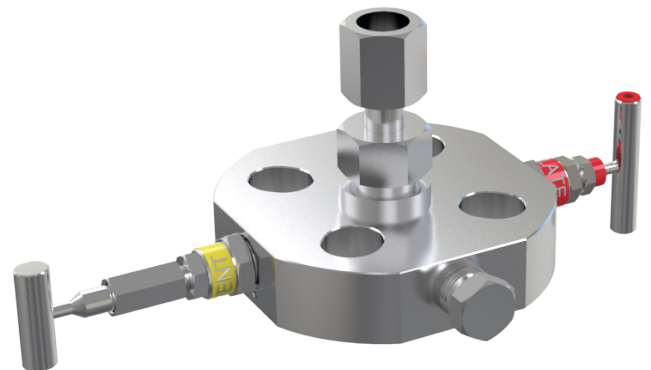
*Close-Coupled Double Block and Bleed MONOFLANGE with IEC 61518 TYPE B Outlet connection (not differential) **Horizontal Mount**. Primary OSY isolate, standard needle valve in secondary isolate and vent, with 1/4" NPT plugged vent outlet.*



*Close-Coupled Double Block and Bleed MONOFLANGE with IEC 61518 TYPE B Outlet connection (not differential) **Vertical Mount**. Primary OSY isolate, standard needle valve in secondary isolate and vent, with 1/4" NPT plugged vent outlet.*

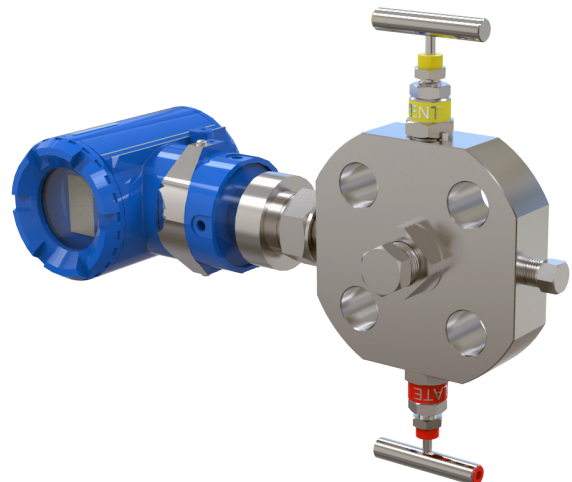


*Through bore, multi outlet, MONOFLANGE manifold.
Branch 1, double block – OS&Y Isolate-HP outlet-OS&Y Isolate-HP outlet.
Branch 2, single block – OS&Y Isolate-HP outlet*



*Block and bleed SWIVEMAS MONOFLANGE with anti-tamper vent valve.
Standard needle valve in primary isolate and vent; 1/4" NPT plugged. 1/2" NPT auxiliary port.*

Direct transmitter mounting – Mount any of the world leading transmitter makes, with compatible connections, to any Stewarts MONOFLANGE for ultimate protection and ease of maintenance. Contact SBG sales to discuss connection options.



The above represents only a small selection of specials supplied to our many customers. With our sales and engineering teams working closely with clients, we tailor our solutions to create superlative products for any application.

STEWART-BUCHANAN GAUGES LTD

Sales Office & Manufacturing Facility - 7 Garrell Road, Burnside Industrial Estate Kilsyth, Glasgow G65 9JX, SCOTLAND
Tel: +44 (0)1236 821533 | Fax: +44 (0)1236 824090 | E-mail: sales@stewarts-group.com | Web: stewarts-group.com

DATA SHEET REF: Mono specials-REV02-15