

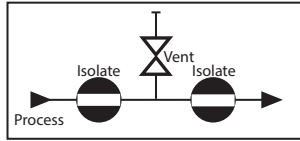
MODEL - BVP



FLANGED Double Block and Bleed (DBB) Valves (With Vent Plug)

| | |
|-----------------|--------|
| ISOLATE | Red |
| VENT | Yellow |
| EQUALIZE | Blue |

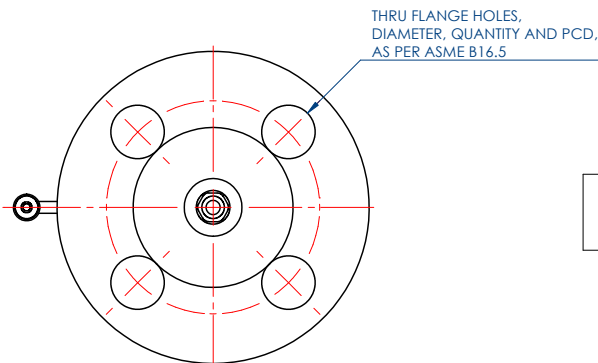
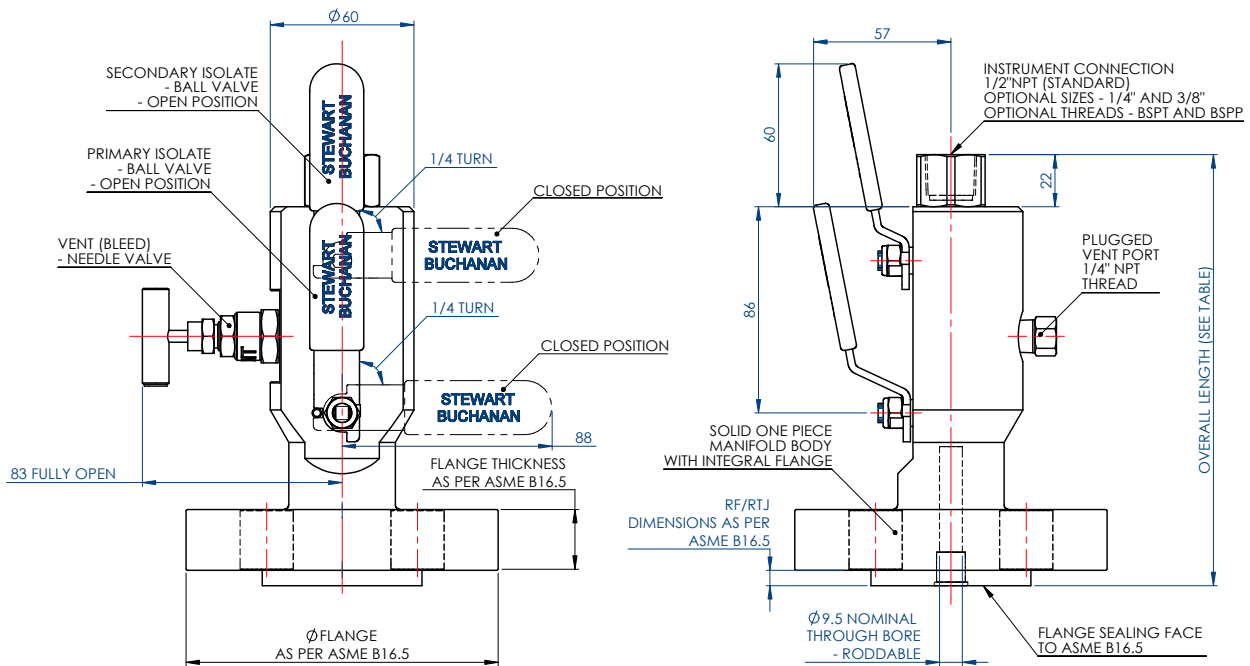
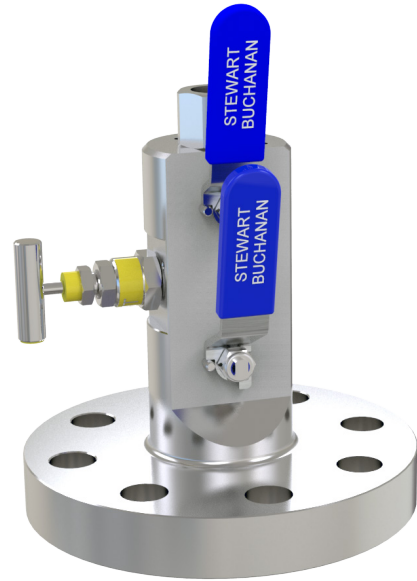
Valve Colour Coding



APPLICATION

The BVP flanged double block bleed valves are suitable for gauge or instrument mounting direct to a system via a standard flange take off point. Various flange ratings are available to suit many pressure ratings and sizes within the piping system. Standard applications include static instrumentation, pressure gauges, manometers and pressure switches. With its integral design, considerable cost, weight and space saving is gained over traditional installations, as well as increased safety due to reduced potential leak paths. Manufactured with the primary and secondary isolate ball valves in line, the BVP is fully rodable allowing for efficient cleaning and maintenance.

Fire safe models are available to meet EEMUA pub. No. 182 – contact SBG sales for details.



FLANGE DIMENSIONS AND WORKING PRESSURES ARE AS STATED IN ASME B16.5

STEWART-BUCHANAN GAUGES LTD

Sales Office & Manufacturing Facility - 7 Garrell Road, Burnside Industrial Estate Kilsyth, Glasgow G65 9JX, SCOTLAND
Tel: +44 (0)1236 821533 | Fax: +44 (0)1236 824090 | E-mail: sales@stewarts-group.com | Web: stewarts-group.com

DATA SHEET REF: BVP-REV01-14



MODEL - BVP



FLANGED Double Block and Bleed (DBB) Valves (With Vent Plug)

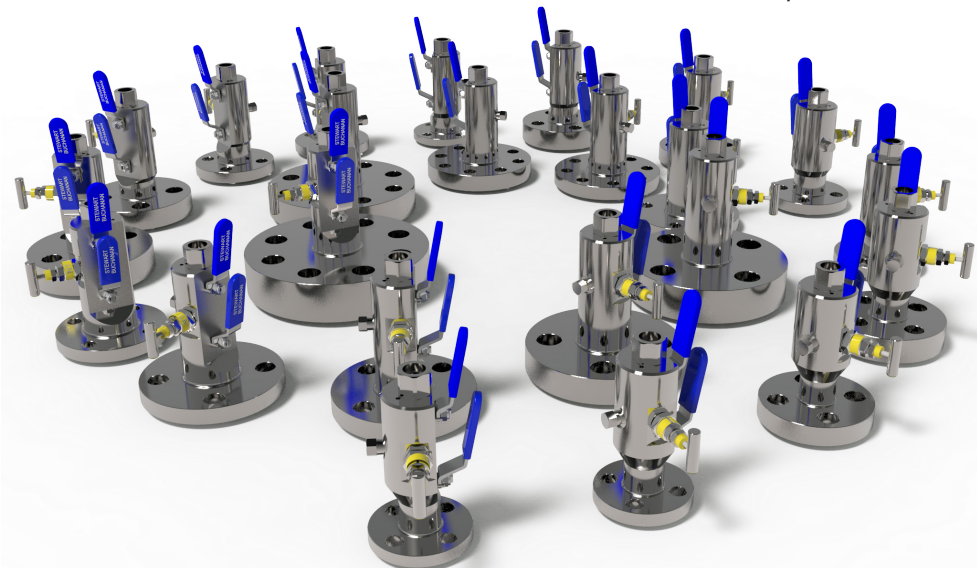
DIMENSION CHART

| Flange Size Code | Standard Overall Manifold Dimensions in mm (excluding valve handles) TO 2", tol± 1mm | | | | | | | | | | | | | | | | | | | | | | | | |
|------------------|--|-----|-----------|-----|----------|-----------|-----|-----------|-----|----------|-----------|-----|-----------|-----|----------|-----------|-----|-----------|-----|----------|-----------|-----|-----------|-----|----------|
| | 1/2" (1) | | | | | 3/4" (2) | | | | | 1" (3) | | | | | 1.5" (4) | | | | | 2" (5) | | | | |
| | RF | | RTJ | | ∅ Flange | RF | | RTJ | | ∅ Flange | RF | | RTJ | | ∅ Flange | RF | | RTJ | | ∅ Flange | RF | | RTJ | | ∅ Flange |
| Std | Fire Safe | Std | Fire Safe | Std | | Fire Safe | Std | Fire Safe | Std | | Fire Safe | Std | Fire Safe | Std | | Fire Safe | Std | Fire Safe | Std | | Fire Safe | Std | Fire Safe | Std | |
| 150 (A) | 173 | 177 | - | - | 89 | 173 | 177 | - | - | 98 | 173 | 177 | 178 | 182 | 108 | 173 | 177 | 178 | 182 | 127 | 173 | 177 | 178 | 182 | 152 |
| 300 (B) | 173 | 177 | 177 | 181 | 95 | 173 | 177 | 178 | 182 | 118 | 173 | 177 | 178 | 182 | 124 | 173 | 177 | 178 | 182 | 156 | 173 | 177 | 179 | 183 | 165 |
| 600 (C) | 178 | 182 | 177 | 181 | 95 | 180 | 184 | 180 | 180 | 118 | 180 | 184 | 180 | 184 | 125 | 180 | 184 | 180 | 184 | 156 | 180 | 184 | 181 | 185 | 165 |
| 900/1500 (D/E) | 180 | 184 | 180 | 184 | 121 | 180 | 184 | 180 | 180 | 130 | 193 | 197 | 193 | 193 | 149 | 193 | 197 | 193 | 197 | 178 | 213 | 217 | 213 | 217 | 216 |
| 2500 (F) | 193 | 197 | 193 | 197 | 133 | 193 | 197 | 193 | 193 | 140 | 193 | 197 | 193 | 193 | 159 | 213 | 217 | 213 | 217 | 203 | 216 | 220 | 216 | 220 | 235 |

HOW TO ORDER

| BVP FLANGE Part No Creation | | | | |
|--|----------------|--|-----------------------|---|
| SAMPLE PART NO | | | | |
| BVP-1C-07F-RF-AI-ZE (ADD ZE WHEN ISO15156 / NACE MR0175 IS REQUIRED) | | | | |
| 1 | c | 07F | RF | AI |
| INLET SIZE & RATING | | OUTLET CODES | FLANGE TYPE | 316 Stainless Steel (UNS S31600) |
| 1 = 1/2" (DN15) | A = 150 CLASS | 03F = 1/4" NPT | RF = RAISED FACE | AI = 316 Stainless Steel (UNS S31600) |
| 2 = 3/4" (DN20) | B = 300 CLASS | 05F = 3/8" NPT | RTJ = RING TYPE JOINT | MO = MONEL® 400 (UNS N04400) |
| 3 = 1" (DN25) | C = 600 CLASS | 07F = 1/2" NPT | | HA = HASTELLOY® C-276® (UNS N10276) |
| 4 = 1.5" (DN40) | D = 900 CLASS | 04F = 1/4" BSPP | | IL = INCONEL® 625 (UNS N06625) |
| 5 = 2" (DN50) | E = 1500 CLASS | 06F = 3/8" BSPP | | IN = INCOLOY® 825 (UNS N08825) |
| 6 = 2.5" (DN65) | F = 2500 CLASS | 08F = 3/8" BSPP | | TI = TITANIUM Gr.2 (UNS R50400) |
| 7 = 3" (DN80) | G = PN2.5 | 13F = 1/4" BSPTaper | | DU = DUPLEX UNS (UNS S31803) |
| 8 = 4" (DN100) | H = PN6 | 14F = 3/8" BSPTaper | | SD = SUPER DUPLEX (UNS S32760) |
| | J = PN10 | 15F = 1/2" BSPTaper | | HC = HASTELLOY® C-22 (UNS N06022) |
| | K = PN16 | Integral SWIVEMAS® Connection to Stewarts Pressure Gauge available | | SA = SUPER AUSTENITIC ST.ST 6%Mo (UNS S31254) |
| | L = PN25 | | | |
| | M = PN40 | | | |
| | N = PN63 | | | |
| | | | | Note: Other materials available on request. |

See HOW TO ORDER NEEDLE VALVE & BALL VALVE Data Sheets For Optional Extras



STEWART-BUCHANAN GAUGES LTD

Sales Office & Manufacturing Facility - 7 Garrell Road, Burnside Industrial Estate Kilsyth, Glasgow G65 9JX, SCOTLAND
Tel: +44 (0)1236 821533 | Fax: +44 (0)1236 824090 | E-mail: sales@stewarts-group.com | Web: stewarts-group.com

