

# MODELS-2021, 2022, 2023, 2024



## All stainless steel construction Duplex Pressure Gauges

### APPLICATIONS

Duplex pressure gauges are used for pressure measurement of two independent points. An easy solution for users seeking to reduce system complexity and cost, this model provides high reliability and performance. An ideal product for satisfying critical installation requirements.

### STANDARD SPECIFICATION

Duplex Gauge (Weatherproof Construction to IP66)  
Two independent systems and movements

#### Sizes

100 and 150 mm

#### Case/ Bezel

316 Stainless Steel

#### Socket & Element

316 Stainless Steel

#### Movement

Stainless Steel Construction

#### Blowout Protection

Blow-out plug at the top of the case

#### Dial

White Anodised Aluminium (Black Printing)

#### Pointer

Non-adjustable red and black painted aluminium pointers

#### Window

Sheet Glass

#### Traceability

All instruments are individually calibrated and have an unique Serial Number.

#### Certification available on request

- Certificate of Conformity Traceable to National Standards
- Group Certification (Pressure Test Calibration Statement)
- Point to Point Test Certificate
- BS EN 10204 3.1 Material Certification

#### Safety

All units are manufactured to comply with EN 837-1, S1 Blowout device specification and other regulatory standards including PED 2014/68/EU.

#### Installation instructions

Refer to EN 837-2 and our [Guidance On Use of Equipment](#) data sheet.

#### Accuracy class

2% Accuracy

#### Over-pressure

0 - 100 bar	>100 - 600 bar
1.25 x FSD	1.15 x FSD

Gauge over-pressure up to 130% of FSD

#### Scale Range

100 & 150mm gauges 0 to 600 bar

Or other equivalent units of pressure or vacuum

#### Pressure Connection Thread

1/8", 1/4", 3/8", 1/2" NPT, BSP, BSPT (1/8" Threads limited to 400 bar)

Model-2022 Direct Mounted



Model-2021 Surface Mounted (Bottom Connection)  
Model-2022 Direct Mounted (Bottom Connection)  
Model-2023 Flush Mounted Screw Fixing (Rear Connection)  
Model-2024 Flush Mounted Clamp Fixing (Rear Connection)  
[See Page-2 for dimension](#)

#### Operating Temperature Range EN837

-20° to 60°C (-4°F to 140°F)

[Options for lower/higher operating ranges \(Contact Sales\)](#)

#### Temperature Error

Additional error when temperature changes from reference

Temperature of 20°C (68°F) ±0.4% for every 10°C (18°F) rising or Falling % of span

#### Optional Extras

- Optional dial materials & Custom markings
- Monel according to ISO 15156 / NACE MR-01-75 wetted parts
- Other pressure connections
- Laminated safety glass / Perspex window
- Customer logo printed on dial
- Liquid filled / Suitable for liquid filling

[Further options on request](#)

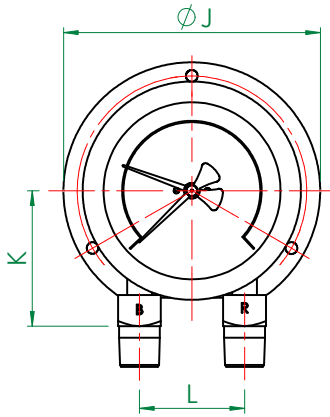
#### Available with a wide range of accessories

Syphons, Snubbers, Overrange gauge protectors, Valves, Manifolds, Diaphragm seals, Swivel adaptors, etc ensures that STEWARTS can provide you with the right product to suit any individual application or requirement.

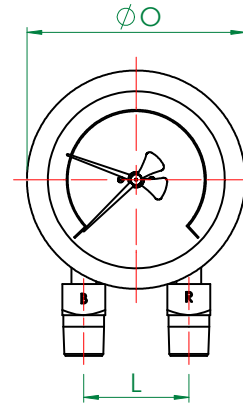
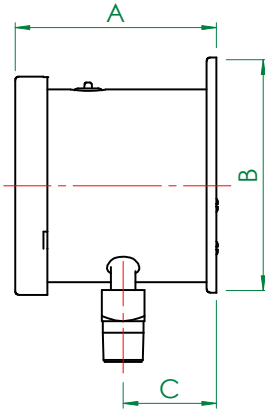
**Ordering Parameters, Please state the following:** SIZE, MODEL NO, SCALE RANGE, CONNECTION, PRESSURE MEDIUM & OPTIONAL EXTRAS

# MODELS-2021, 2022, 2023, 2024

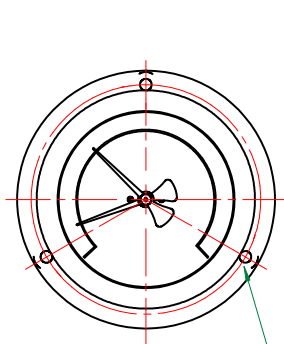
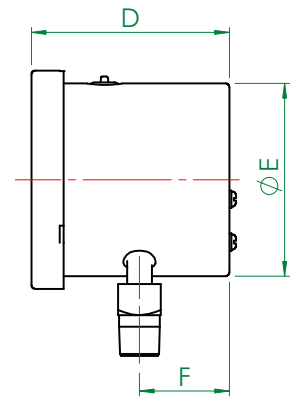
All stainless steel construction Pressure Gauges



**MODEL 2021  
SURFACE MOUNTED**

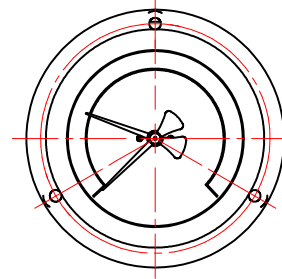
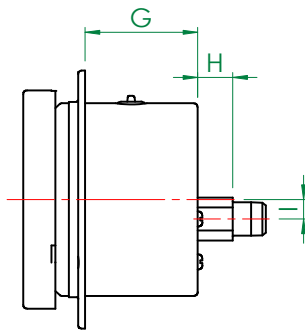


**MODEL 2022  
DIRECT MOUNTED (STANDARD)**

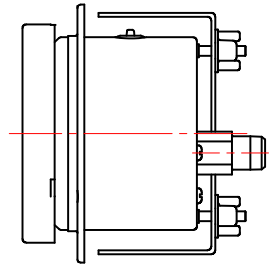


3 HOLES Ø"M"  
ON "N" PCD @120°

**MODEL 2023  
FLUSH MOUNTED SCREW FIXING**



**MODEL 2024  
FLUSH MOUNTED CLAMP FIXING**



General Arrangement Dimensions in mm, tol' ± 1mm																	
Dim	A	B	C	D	E	F	G	H	I	J	K	L	M	N	O	Panel cut-out	
Dial Ø 4" (100mm)	104	121	48	100	99	46	58	18	10	132	70	54	6	118	112	105	
6" (150mm)	104	184	45	101	159	47	63	18	10	196	103	54	6	178	161	165	

## STEWART-BUCHANAN GAUGES LTD

Sales Office & Manufacturing Facility - 7 Garrel Road, Burnside Industrial Estate, Kilsyth, Glasgow G65 9JX, SCOTLAND  
Tel: +44 (0)1236 821533 | Fax: +44 (0)1236 824090 | E-mail: sales@stewarts-group.com | Web: stewarts-group.com

DATA SHEET REF: 202-REV01-18

