

MODELS-T50 2"



All stainless steel construction Pressure Gauges

APPLICATIONS

T50 series gauges are suitable for corrosive environments and gaseous or Liquid media that will not obstruct the pressure system in chemical, Petro-chemical, refining, power, marine, food and pharmaceutical Processing applications, on and offshore.

STANDARD SPECIFICATION

Stainless Steel Gauge with Blow-out Device (Weatherproof Construction to IP66)

Sizes

2" (50mm)

Case/ Bezel

316 Stainless Steel

Socket & Element

316 Stainless Steel

Movement

Stainless Steel Construction

Blowout Protection

Blow-out plug at the top of the case

Dial

White Anodised Aluminium (Black Printing)

Pointer

Black Aluminium

Window

Sheet Glass

Accuracy

+/-1%

Traceability

All instruments are individually calibrated and have an unique Serial Number.

Certification available on request

- Certificate of Conformity Traceable to National Standards
- Group Certification (Pressure Test Calibration Statement)
- Point to Point Test Certificate
- BS EN 10204 3.1 Material Certification

Safety

All units are manufactured to comply with EN 837-1, S1 Blowout device specification and other regulatory standards including PED 2014/68/EU.

Installation instructions

Refer to EN 837-2 and our [Guidance On Use of Equipment](#) data sheet.

Range Selection

Code	Range(psi)
V30	VAC 0-30
R315	REC 3-15
C15	COMP 30+15
C30	COMP 30+30
C60	COMP 30+60
C100	COMP 30+100
C160	COMP 30+160
C200	COMP 30+200
C300	COMP 30+300
15	0-15
30	0-30
60	0-60
100	0-100
160	0-160
200	0-200
300	0-300
400	0-400
600	0-600
800	0-800
1K	0-1,000
1500	0-1,500
2K	0-2,000
3K	0-3,000
4K	0-4,000
5K	0-5,000
6K	0-6,000
10K	0-10,000

Additional Code Suffix for dual scale ranges (B = BAR/PSI) (K = KPA/PSI) (KgCm2= KgCm2 / PSI)

Over-pressure

0 - 100 bar	>100 - 700 bar
1.25 x FSD	1.15 x FSD

Dry, Liquid Fillable or Pre-Filled. Option also available.

With liquid-filled case for applications with high dynamic Pressure pulsations or vibration.

Model-T50 Standard Direct Mounted



Mounting Types

Standard Direct Mounted (Bottom Vertical).

CB: Centre Back Connection.

FP: Front Flange for Panel Mounting.

FC: Clamp Fixing for Panel Mounting.

Operating Temperature Range EN837

-20° to 60°C (-4°F to 140°F)

Options for lower/higher operating ranges (Contact Sales)

Temperature Error

Additional error when temperature changes from reference

Temperature of 20°C (68°F) ±0.4% for every 10°C (18°F) rising or Falling % of span

Optional Extras

- Optional dial materials & Custom markings
- Laminated safety glass / Perspex window
- Orifice Restrictor Screw (standard Ø0.9mm, Ø0.4mm on request)
- Customer logo printed on dial
- Liquid filled / Suitable for liquid filling

Further options on request

Available with a wide range of accessories

Syphons, Snubbers, Overrange gauge protectors, Valves, Manifolds, Diaphragm seals, Swivel adaptors, etc ensures that STEWARTS can provide you with the right product to suit any individual application or requirement.

Pressure Connection Thread

1/8", 1/4" NPT,

MAX PRESSURE EN 837-1	
THREAD EN837	NPT (316ss)
1/8"	400 bar
1/4"	700 bar

How to Order

- 1 Model No.
- 2 Choose Pressure Range (code).
- 3 Choose Mounting Type.
- 4 If special requirements are needed add description.

FOR EXAMPLE (AS SHOWN) T50-60

2inch Fillable Stainless Steel Gauge 1/4inch NPT.

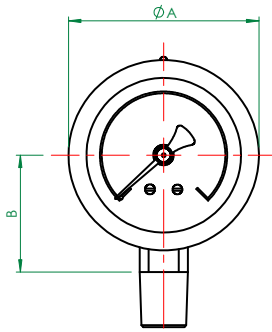
0-60 psi.

No Non Standard Requirements.

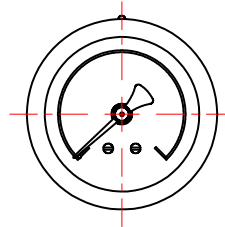
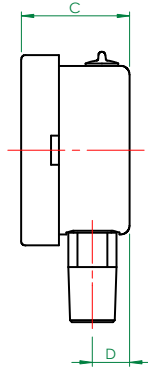
Note: Add 1/8 if you require T50 with 1/8" NPT.

MODELS-T50 2"

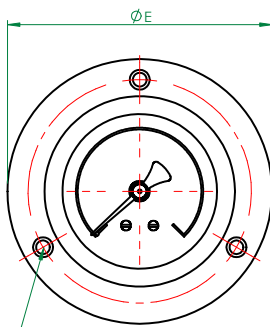
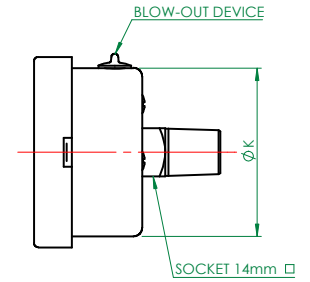
All stainless steel construction Pressure Gauges



**MODEL T50
DIRECT MOUNTED (STANDARD)**

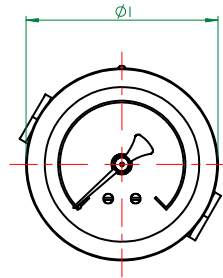
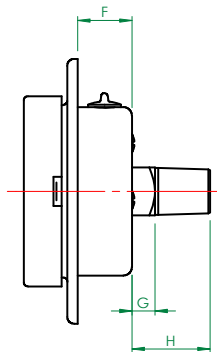


**MODEL T50-CB
CENTRE BACK CONNECTION**

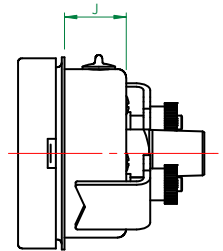


3 HOLES ØL CSK
@120° ON 'M' PCD

**MODEL T50-FP
FRONT FLANGE PANEL MOUNT**



**MODEL T50-C
CLAMP FIXING PANEL MOUNT**



General Arrangement Dimensions in mm, tol' ± 1mm

DIMS	A	B	C	D	E	F	G	H	I	J	K	L	M	PANEL CUT OUT
50mm	55.4	34	31.5	10.8	77	15.8	6.7	22.7	55.9	18	49	3.8	65	53
2 in	2.18	1.34	1.24	0.42	3.03	0.62	0.26	0.89	2.20	0.71	1.93	0.15	2.56	2.09

STEWART-BUCHANAN GAUGES LTD

Sales Office & Manufacturing Facility - 7 Garrell Road, Burnside Industrial Estate, Kilsyth, Glasgow G65 9JX, SCOTLAND
Tel: +44 (0)1236 821533 | Fax: +44 (0)1236 824090 | E-mail: sales@stewarts-group.com | Web: stewarts-group.com

DATA SHEET REF: T50-REV01-20

