

## Models- 3010, 3011, 3012. Stainless Steel Case & Internals

Specially developed to meet the need for gauges working at great depths under the sea and in Hyperbaric conditions.

### Case

AISI 316 Stainless Steel.  
Pressure tight for depths up to 1,000 ft (300 mtr) of water.  
*Special gauges can be manufactured for depths up to 10,000 ft (3,000 mtr) of water on 100mm (4") gauges only.*  
Liquid filled (recommended)

### Socket + Element

AISI 316 Stainless Steel

### Thread

1/8", 1/4" NPT, BSP, BSPT on 63mm gauge  
1/8", 1/4", 3/8", 1/2" NPT, BSP, BSPT on 100 & 150mm gauges

### Movement

Stainless Steel

### Dial

White Aluminium (Black Printing)

### Pointer

Black Aluminium

### Window

Toughened glass on 1000ft 63 & 100mm gauges  
Acrylic on 1000ft 150mm gauge &  
4000,5000 &10000ft 100mm gauges.

### Standard Size

63, 100, 150mm

### Accuracy class

1%

### Scale Range

#### Rear Connect

Vacuum to 1,400 bar (20,000 psi) on 63mm gauge  
Vacuum to 3,000 bar (45,000 psi) on 100 & 150mm gauges

#### Bottom Connect

Vacuum to 700 bar (10,000 psi) on 63mm gauge  
Vacuum to 700 bar (10,000 psi) on 100 & 150mm gauges

### High Pressure Connections Available

1/4" MPF(Female) 1/4" MPM(Male) 9/16" MPM(Male)  
1/4" HPF(Female) 1/4" HPM(Male) 9/16" HPM(Male)

### Ordering information

State:- Pressure gauge model  
/ Nominal size / Scale range  
/ Size and location of connection / Optional extras reqd.

### Optional extras

White plastic dial (Black Printing).  
Micro adjustable pointer / Black Finish.  
Other pressure connections (including high pressure).  
Monel to Nace MR-01-75 wetted parts.  
Further options: on request



Flush Mounted  
Screw Fixing  
Model - 3012

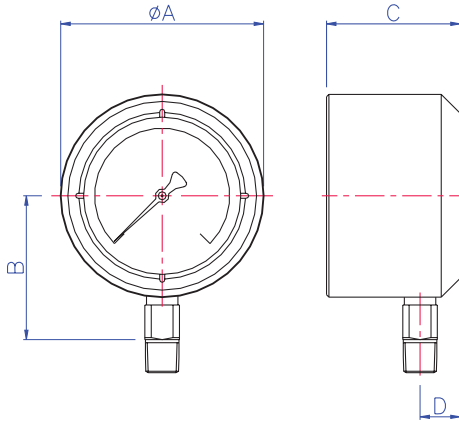
We manufacture a wide range of instruments to customer's special requirements  
We shall be pleased to discuss and advise on your specifications.

Specifications and dimensions given in this leaflet represent the state of engineering at the time of printing.  
Engineering modifications may take place without prior notice.

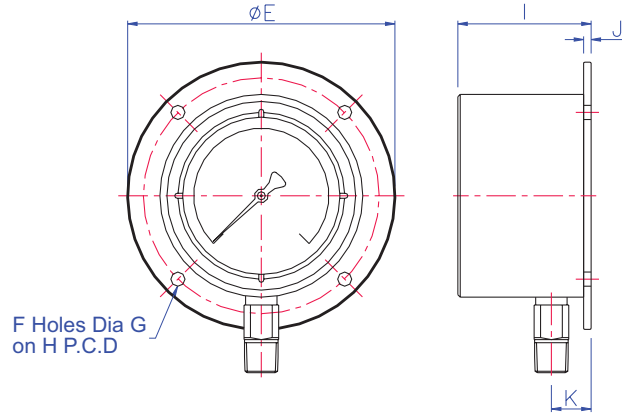
**STEWART-BUCHANAN GAUGES LTD**  
Sales Office & Manufacturing Facility.  
Burnside Industrial Estate, Kilsyth, Glasgow, G65 9JX, SCOTLAND  
Tel:- +44 (0)1236 821533  
Fax:- +44 (0)1236 824090  
E-Mail:- sales@stewarts-group.com  
Web Site:- www.stewarts-group.com

**Models- 3010, 3011, 3012.**  
Stainless Steel Case & Internals

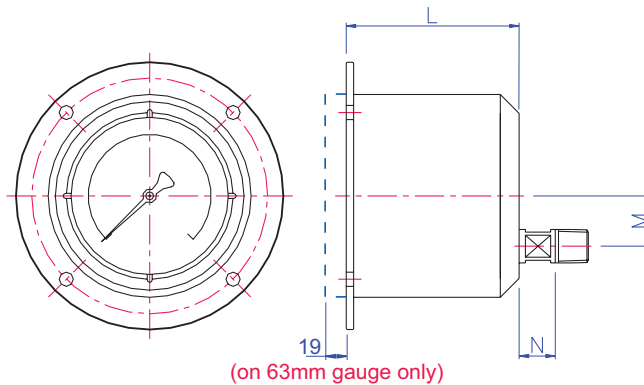
Direct Mounted  
Model - 3010



Surface Mounted  
Model - 3011



Flush Mounted  
Screw Fixing  
Model - 3012



Sub Sea Gauges Dimension Chart

Depth	Dim mm															Panel Cutout
	Diameter	A	B	C	D	E	F	G	H	I	J	K	L	M	N	
1,000ft/300m	63	84	50	53	19	110	3	5.2	95	53	4	19	34	18	18	80
	100	129	91.5	85	26	170	4	9	150	85	5	26	85	32	23	133
	150	178	116	134	34	240	4	10.5	208	134	10	33	134	32	23	185
4,000ft/1,200m	100	129	91.5	96	26	170	4	9	150	96	5	26	96	32	23	133
5,000ft/1,500m	100	132	93	96	26	170	4	9	150	96	5	26	96	32	23	136
10,000ft/3,000m	100	139	96.5	111	26	180	4	9	160	111	5	26	111	32	23	143