

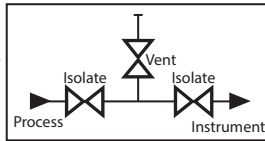
MODEL - K3



DOUBLE BLOCK AND BLEED VALVE (Angled Bonnet) THREE VALVE MANIFOLD 413 bar (6000 psi)

ISOLATE	Red
VENT	Yellow
EQUALIZE	Blue

Valve Colour Coding



APPLICATION

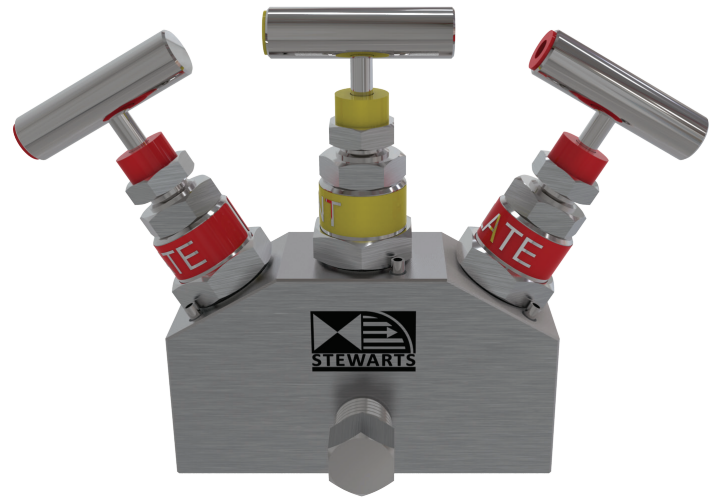
Using the 3-valve DBB manifold

In normal operation the "isolate" valves are open while the "vent" valve and plug are closed. This provides unobstructed flow to the instrument or other equipment. To isolate the instrument for maintenance and/or removal, first close the "primary" upstream valve. Next open the "vent" valve to relieve the trapped pressure and if necessary use the vent plug to drain off excess fluid. Close the secondary "isolate" downstream valve, this acts as a safety back up, then close the "vent" valve and plug. The instrument or other equipment can now be safely removed and maintenance carried out. Both flow paths to the exterior of the system through the manifold have been double blocked for safety.

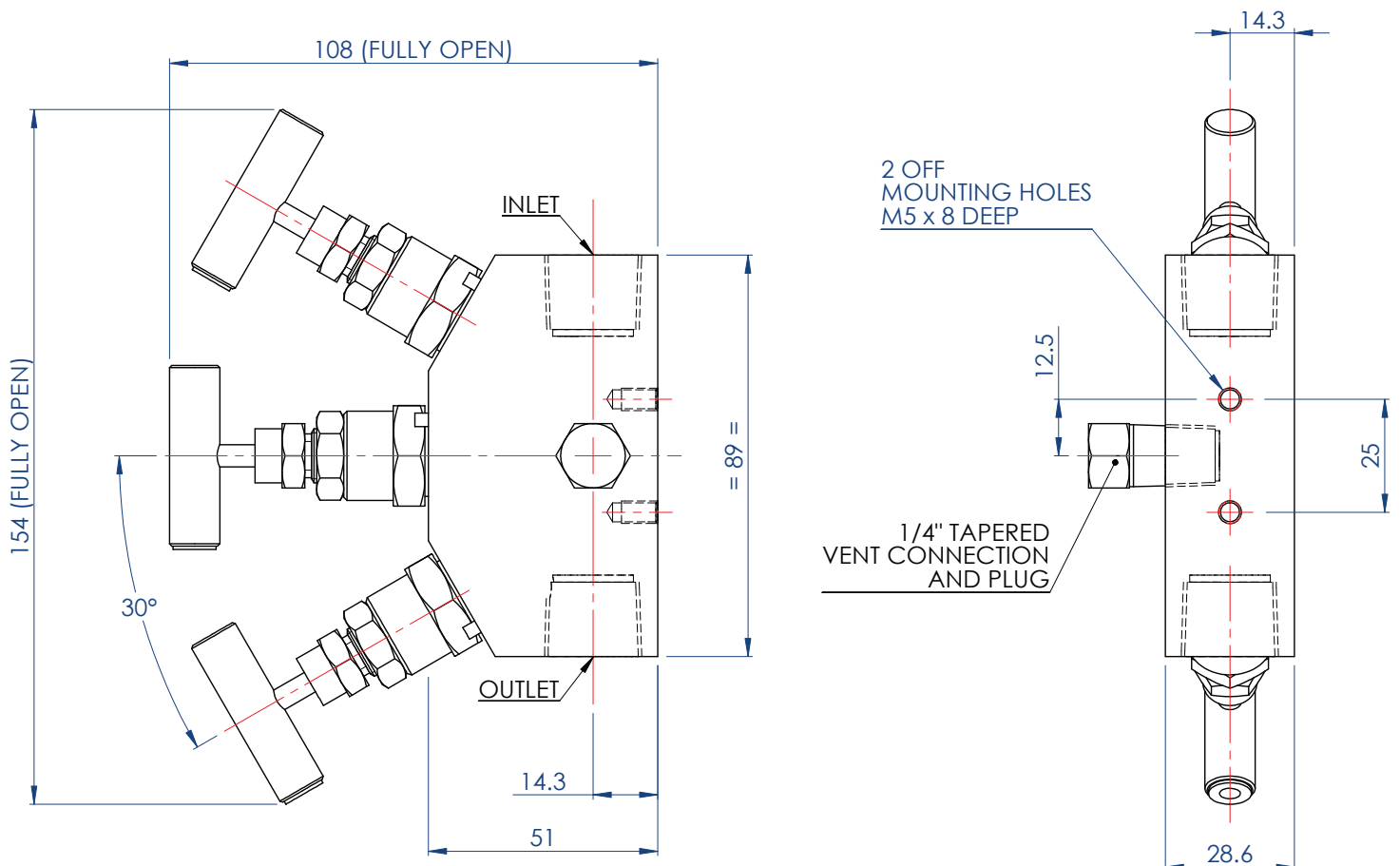
Calibration and other options

It is possible to connect a test gauge set up to the vent plug connection in order to calibrate the instrument without removing it from the system. With use of the "vent" valve and plug it may also be possible to carry out system bleed, sampling and injection operations.

Also available in a range of other materials and options
(See HOW TO ORDER Data Sheet).



WEIGHT = 1.2 kg



STEWART-BUCHANAN GAUGES LTD

Sales Office & Manufacturing Facility - 7 Garrel Road, Burnside Industrial Estate, Kilsyth, Glasgow G65 9JX, SCOTLAND
Tel: +44 (0)1236 821533 | Fax: +44 (0)1236 824090 | E-mail: sales@stewarts-group.com | Web: stewarts-group.com

DATA SHEET REF: K3-REV01-14

