

SUBSEA Stainless Steel Gauges

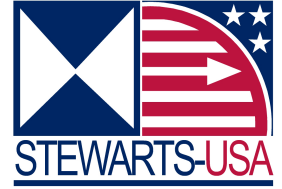
2.1/2" Model-20SUBSEA 1/4"NPT

4" Model-40SUBSEA 1/4"NPT & 41SUBSEA 1/2"NPT

6" Model-60SUBSEA 1/4"NPT & 61SUBSEA 1/2"NPT

VibraGauge® for Dampening of vibration & pulsation is an option.

Add "V" to model number e.g. Model-41VSubsea



Case

AISI 316 Stainless Steel.

Pressure tight for depths up to 1,000 ft (300 mtr) of water.

Special gauges can be manufactured for depths up to 10,000 ft (3,000 mtr) of water on 100mm (4") gauges only.

Liquid filled (recommended)

Socket + Element

AISI 316 Stainless Steel

Thread

1/4" NPT, on 2 1/2" (63mm) gauge

1/4", 1/2" NPT, on 4" & 6" (100 & 150mm) gauges

Movement

Stainless Steel

Dial

Aluminium (White printing on Black background)

Pointer

White Aluminium

Window

Toughened glass (Acrylic on 6" (150mm) gauge)

Standard Size

2 1/2" 4" & 6" (63, 100, & 150mm)

Accuracy class

+/- 1%

Mounting types and Case types

No Code: Bottom Connection Standard

LB: Lower Back Connection.

FP: Front Flange Panel Mount.

RF: Rear Flange Panel Mount.

Scale Range

Vacuum to 1,400 bar (20,000 psi) on 2 1/2" gauge

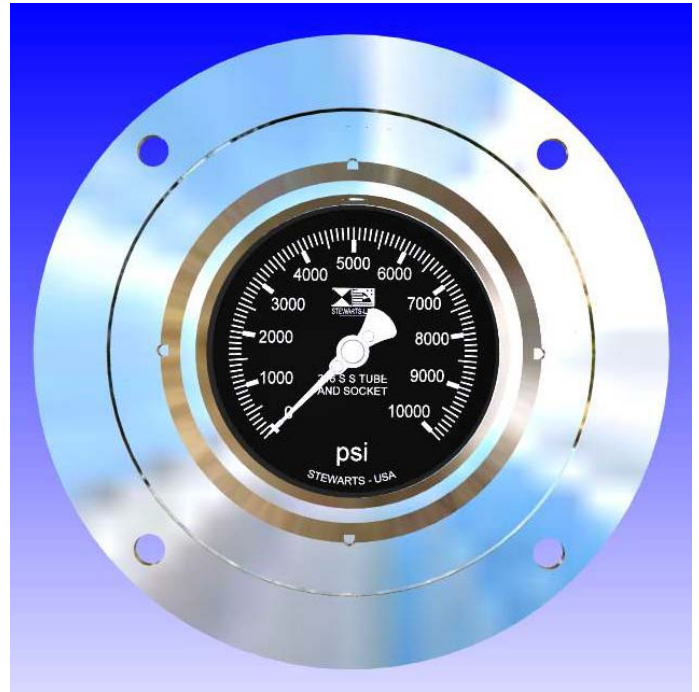
Vacuum to 3,000 bar (45,000 psi) 4" & 6" gauges

High Pressure Connections Available

1/4" MPF(Female) 1/4" MPM(Male) 9/16" MPM(Male)

1/4" HPF(Female) 1/4" HPM(Male) 9/16" HPM(Male)

Further options: on request



Front Flange Panel Mount
Model - 40SUBSEA

How to order by Part Number

- 1 **Model Number.**
- 2 Choose **Pressure Range.**
- 3 Choose **Mounting Type** (code).
4. **High Pressure Connection** (code) if desired.
- 5 100% **Glycerin Filled** (recommended).

Model	Dial Range Code	Mounting Type	High Pressure Connection	100% Glycerin Filled Recommended
41SUBSEA	0-10000 psi	RF	1/4HPF	GF

Specially developed to meet the need for gauges working at great depths under the sea and in Hyperbaric conditions.

We manufacture a wide range of instruments to customer's special requirements
We shall be pleased to discuss and advise on your specifications.

Specifications and dimensions given in this leaflet represent the state of engineering at the time of printing.
Engineering modifications may take place without prior notice.

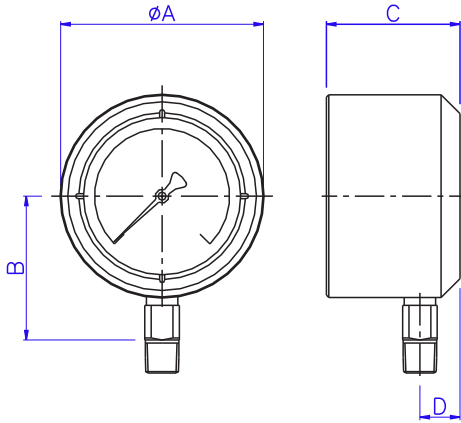
SUBSEA Stainless Steel Gauges

2.1/2" Model-20SUBSEA 1/4"NPT

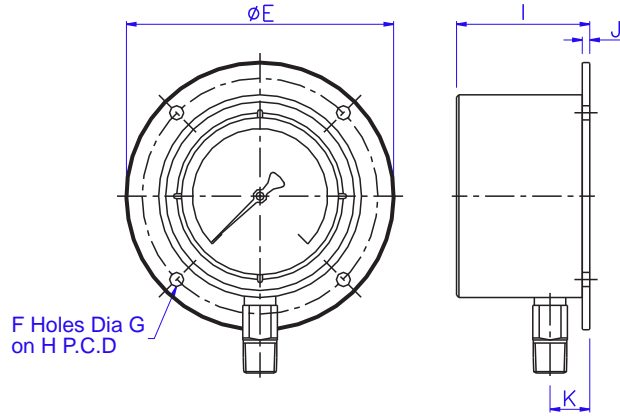
4" Model-40SUBSEA 1/4"NPT & 41SUBSEA 1/2"NPT

6" Model-60SUBSEA 1/4"NPT & 61SUBSEA 1/2"NPT

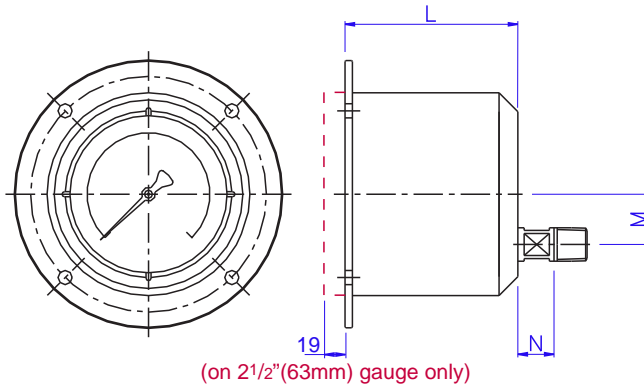
Bottom Connection Standard



Rear Flange Panel Mount



Front Flange Panel Mount



	A	B	C	D	E	F	G	H	I	J	K	L	M	N	Cut Out
(63mm) 2 1/2"	84 3.31	50 1.97	53 2.1	19 0.75	110 4.33	3 0.12	5.2 0.20	9.5 0.37	53 2.1	4 0.16	19 0.75	34 1.34	18 0.71	18 0.71	80 3.15
(100mm) 4"	129 5.08	91.5 3.60	85 3.35	26 1.02	170 6.69	4 0.16	9 0.35	150 5.90	85 3.35	4.75 0.19	26 1.02	110 4.33	32 1.26	23 0.90	133 5.24
(150mm) 6"	178 7.00	116 4.57	134 5.27	34 1.34	240 9.45	4 0.16	10.5 0.41	208 8.19	134 5.27	10 0.39	33 1.30	134 5.27	32 1.26	23 0.90	185 7.28

Dimensions for gauges to depths over 1,000 ft (300 mtr) of water will be supplied on request.

Warning : Before use please consult our recommendation regarding selection and installation. Copies available on request.

STEWARTS - USA
 6786 Tipperary
 HOUSTON, TX 77061 USA
 Phone. 713-643-1022
 Fax. 713-643-2855
 Toll Free. 1-800-901-1316
 Web. stewartsusa.com